

**JOBSITE
SUPPLY**

CONSTRUCTION IDEAS AT WORK

**Indiana's One Stop Shop For
Concrete Accessories
and More!**



Building Enclosures • Tarps • Blankets • Dehumidification •
Temporary Lighting • Heaters • Ground Thawing • Snow
Melt • High Visibility • Winter Jackets • Gloves • Rain Gear •
Helmet Liners • Boots •
And More!

SALES . SERVICE . RENTALS . INSTRUCTION

Indianapolis
624 S. Missouri St.
Indianapolis, IN 46225

317-684-7474

Monday - Friday
6 am - 5 pm

Saturday, April - October
7 am - Noon

JobsiteSupply.com

800-874-7415

#WeAreConcrete

Fort Wayne
3501 Kenosha Rd
Fort Wayne, IN 46806

260-494-3200

Monday - Friday
7 am - 5 pm

WINTER ACCESSORIES

CONCRETE INSULATING BLANKETS



**FOR SALE
OR RENT**

6'x25'

JOB SITE INSULATING BLANKET ROLLER

Designed to save you space by rolling 6'x25' Jobsite Supply R-7.74 insulating blankets into tight packages.



BLUE LINE HEAVY DUTY

Reinforced "Visqueen" **Clear** Poly Sheeting

- 20'x100'
- 40'x100'



TWIST LOCK FASTENERS

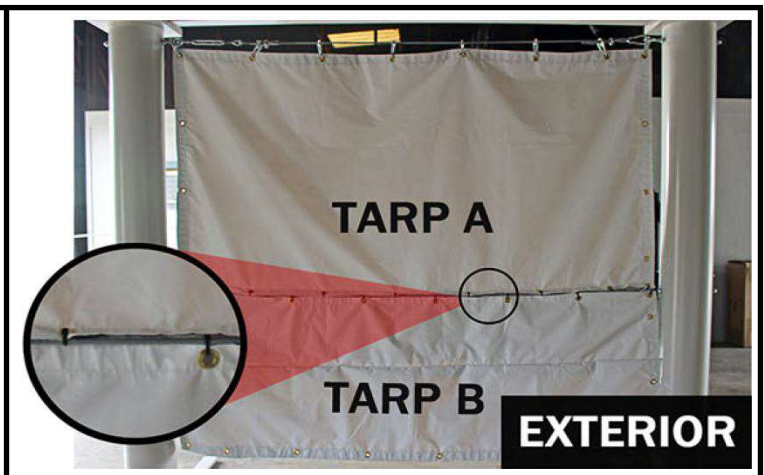
Twist Lock

Connects poly sheeting by a simple place, poke & twist.



REVERSE OVERLAP*

Tarps are constructed so the end result is a 1' flap overlap that will connect to a standing seam 1' from the edge on the connecting tarp. Tarps can be constructed to utilize this method on all 4 edges of a tarp.



* Special order custom tarps. Please allow lead times.

GROUND THAWING



Tamarack Industries

THAWS THE GROUND AND KEEPS YOUR PROJECT MOVING DURING COLD WINTER MONTHS!

**FOR SALE
OR RENT**

Tamarack Industries presents the **Heat King** Mobile Glycol Heating System. A faster way to prepare foundations, sites and cure concrete in cold weather.



HK150



HK300



HK500

GROUND THAWING CAPACITY	up to 2,800 SQ FT	up to 5,600 SQ FT	up to 11,200 SQ FT
CONCRETE CURING CAPACITY	up to 5,600 SQ FT	up to 11,200 SQ FT	up to 22,400 SQ FT
BTU	150,000	290,000	436,000
APPROX. RUN TIME	up to 140 HRS	up to 73 HRS	up to 65 HRS
ELECTRIC REQUIREMENTS	(1) 120V - 15A CIRCUIT	(1) 120V - 20A CIRCUIT	(2) 120V - 15A CIRCUIT

Heat King saves on labor, speeds preparation and lowers energy cost by as much as 80%.

USED Heat King units available for sale!

CONSTRUCTION HEATERS

L.B.WHITE

PORTABLE HEATING & COOLING

TRADESMAN®

✓ Direct-fired forced air

Reliable directional heat

125

125,000 BTU/HR

LP



*** 170**

170,000 BTU/HR

LP

NG



*** 400**

400,000 BTU/HR

LP

NG

DF (LP/NG)



TRADESMAN® K

✓ Direct-fired forced air

✓ Onboard fuel

Reliable, directional heat

125

125,000 BTU/HR

Oil (Diesel)



*** 175**

175,000 BTU/HR

Oil (Diesel)



*** 210**

210,000 BTU/HR

Oil (Diesel)



*** 400**

400,000 BTU/HR

Oil (Diesel)



*** 650**

650,000 BTU/HR

Oil (Diesel)



WORKMAN®

✓ No electricity required

✓ Convection

Fast, convenient heat

100N

100,000 BTU/HR

NG



*** 225 PLUS**

225,000 BTU/HR

LP



NORSEMAN®

✓ No electricity required

✓ Convection

✓ Heavy-duty steel body

Fast, convenient heat

200 PLUS

200,000 BTU/HR

LP



250

250,000 BTU/HR

LP



TORCHES

✓ Handheld

Burns brush
Thaws pipes
Melts ice

*** 250,000 - 500,000 BTU/HR**

LP

NG



SUNBLAST®

✓ No electricity required

✓ Radiant-style

✓ Heats objects

Fast, convenient heat

15

15,000 BTU/HR

LP-20 lbs tank



30

30,000 BTU/HR

LP-20 lbs tank



35

35,000 BTU/HR

LP



125

125,000 BTU/HR

LP

NG



*STOCK ITEMS. ALL OTHERS, SPECIAL ORDER

EVAPORATIVE COOLING

✓ Portable

✓ Rental ready

✓ Low operating cost

950 sq. ft. of coverage

Automatic shut-off pump

NEW PC-31

3100 CFM



CONSTRUCTION HEATERS

PORTABLE HEATING & COOLING

L.B.WHITE

FOREMAN®

- ✓ Indirect-fired
- ✓ Ductable
- ✓ Quiet

100% clean, dry heat
Ideal for tightly-sealed spaces
Preferred for concrete curing

NEW

230

230,000 BTU/HR

Oil (Diesel) / DF (LP/NG)



500

500,000 BTU/HR

Oil (Diesel) / DF (LP/NG)



750

750,000 BTU/HR

Oil (Diesel) / DF (LP/NG)



PREMIER®

- ✓ Direct-fired enclosed flame
- ✓ Ductable
- ✓ Quiet

Commonly used during all phases of construction

NEW

40

40,000 BTU/HR

LP-20 lbs tank



80

80,000 BTU/HR

LP / DF (LP/NG)



170

170,000 BTU/HR

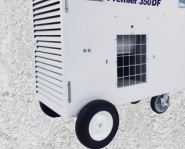
LP / DF (LP/NG)



*** 350**

350,000 BTU/HR

DF (LP/NG)



BOSS™

- ✓ Direct-fired high CFM

Efficient method of heating large spaces all season

400 DF

400,000 BTU/HR

DF (LP/NG)



1000

1,000,000 BTU/HR

DF (LP/NG)



*STOCK ITEMS. ALL OTHERS, SPECIAL ORDER

HEATERS - AIR MOVERS - DEHUMIDIFIERS

FROST *Fighter*



**FOR SALE
OR RENT**

High Capacity Heating, Anywhere You Need It!

Model	DF400	DF1500
Capacity	400,000 BTU	1.5 Million BTU
Fuel	LP/Natural Gas	LP/Natural Gas
Fan	1725/2500 CFM	7700 CFM
Dimension Crated	47"x28"x43"	66"x28"x43"



**FOR SALE
OR RENT!**

CPB42-B - 42"
CPB36-D - 36"



Heavy Duty 2-Wheel Air Movers

patron

BY RENTQUIP

Patron E1.5 Heater

- 1500 watt electric
- 5100 BTU
- Thermostatically controlled



Axial Air Mover

PBX24

- Directs air flow toward problem corners
- Quiet operation
- Less than 2.5 Amps on high speed
- 3,000 CFM blower
- Long-life, 2-speed motor
- GFCI Protection



UsePhoenix.com

**Ask Us About...
DryLINK - Mobile App**
New Technology

Get moisture content readings in seconds using bluetooth technology. Monitor moisture in real-time and get alerts.

***FireBird Heater**
4027300

- Powerful, portable, safe
- 30 Amps, 18,000 BTUs, 46°F
- 50 Amps, 31,000 BTUs, 80°F
- Uses 110V/220V power
- Multiple duct options



***R175 LGR Dehumidifier**
4029200

- Compact design, big performance
- 6.3 Amps, 110V/120V power
- Water removal of 92 PPD at 80°F/60% RH (AHAM)
- 230 CFM Airflow



***FireBird Compact 20 Heater**
4033450

- Portable, electric heater
- Uses 120V AC
- 12 Amps/Circuit (X 4 circuits)
- 5,000 - 20,000 BTUs
- 80°F max temp rise



WINTER ACCESSORIES



2103 The **LED Headlamp** is compact, lightweight and puts out a wide flood beam.



2111-21 **USB Rechargeable Hard Hat Headlamp** delivers 475 lumens of output, and is capable of all-day runtime.



2361-20

M18™ ROVER™ Flood Light (Tool-Only) delivers up to 30% brighter light output than 250-watt halogen floodlights.



MXF041-1XC

MXFUEL ROCKET TOWER LIGHT/CHARGER most portable 10' light inside/outside with 27000 lumens of task/area lighting.

2131-20

M18 ROCKET Dual Power Tower Light provides 25% more light and all day operation on the job site with 2500 lumens of output.



2135-21HD

M18 ROCKET LED Tower Light/Charger Kit is designed to deliver you a lighting solution that adapts, performs, and survives to the jobsite.



2105

Penlight delivers 100 lumens of output for a bright, clear view.



Batteries



EN22	Industrial 9V Battery
EN91	Industrial AA Battery
EN92	Industrial AAA Battery
EN93	Industrial C Battery
EN95	Industrial D Battery



KOLDFO1	Kold Flo 1 - Gallon Bottle
UPM-Blue	UPM Winter Cold Patch 50#
UPM-Green	UPM Spring-Fall Cold Patch 50#
UPM-Yellow	UPM Summer Cold Patch 50#



New Grip-Rite String Reinforced Poly features woven reinforced bands with perforated eye lets that enable and secure fastening to scaffolding. Used in combinations with Grip-Rite anchor ties, our enclosure system forms a reliable barrier between the job site and the elements.



Plastic Snow Shovels

24" Shovel



18" Shovel



Portable Metal Halide Cart Lights



Product #5270

- 300lm
- Includes stand



WL400MH

Wobble Light 400W Metal Halide
400 Watts,
120 Volts,
40,000 Lumens

No Set-Up - Just Plug It In. Wobblelight

The only patented self-righting work light, provides the most cost-effective and high performing job site lighting solution for the construction and industrial markets.

Durable & Virtually Indestructible • 36" Tall

Replacement Bulbs in Stock



MANY AVAILABLE!
1000 to 6500 Watt

FOR SALE

4CCPL-50 50LB Bag
4CCPLPAL-50LB Pail
(subject to availability)

PELADOW™ Premier Snow & Ice Melter is the fastest-acting, most effective product available for melting snow on sidewalks, steps and drives, and preventing ice-related accidents.

Pellet Style Ice Melt utilizing concrete safe calcium chloride to provide melting down to -25° below zero

Exothermic reaction on contact with water



Addition Cost Effective Ice-Melt Products Available.
skids, truck loads etc.

WINTER PERSONAL PROTECTION

JOBSITE SUPPLY STOCKS A COMPLETE LINE OF WORK GLOVES:

- Leather Palm
- Leather Drivers
- Insulated Drivers
- PVC Dot
- Kevlar Cut Resistant
- Brown Jersey
- PVC Dipped
- Nitrile



1475 M-XL



1485 M-2XL



77-468 L-XL



- Hand warmers - up to 10 hours of hand and pocket warming. HWES
- Toe warmers specially made for use in boots. TWES
- Adhesive body warmers AWES

PIP® Heavy Weight Cotton/Polyester Jersey Glove with Red Jersey Liner

Features:

- Heavy weight - used for light protection in warehousing, farming and the auto industry
- Cotton/Polyester construction is breathable and decreases hand fatigue
- Wing thumb increases comfort in open-handed work



TREDS

- No right/no left - for no hassle design
- Easy on/easy off
- Provided by 800% elongation, and smooth, drag-free inner surface
- Lasts 4x longer
- Made out of Natural Latex Rubber, providing enhanced material strength



225 Plus Quilted Hardhat Liners 22298



250M Wool Knit Hardhat Liners 22297

Slush Boot

- Fits over most work shoes & boots
- High chemical resistance
- Sizes 8-18



5-Buckle Boot

- Slush Boot has no right/no left for a no hassle design
- Sizes Available: 8-16
- Rubber soles



17851	17" Slush boot, medium 8-10
17852	17" Slush boot, large 11-12
17855	17" Slush boot, large-x-large 13-14
17853	17" Slush boot x-large 15-16

WINTER PERSONAL PROTECTION



PROTECTIVE INDUSTRIAL PRODUCTS



**Seamless Knit Cotton/
Polyester Glove** with
Double-Sided PVC Dot Grip - Heavy
Weight

360- BEANIE-ORANGE

- Hi-Visibility Winter Beanie Cap
- Non-ANSI
- Reflective Stripe



360-BEANIE-LY

- Hi-Visibility Winter Beanie Cap
- Non-ANSI
- Reflective Stripe



Rip-Stop Premium Plus Bomber Jacket

Product #333-1770

- PU coated waterproof rip stop polyester shell with taped seams
- Harness "D" ring access point on back
- Zipper closure with double flap storm front



HI-VIS Brushed Acrylic Glove with Latex Crinkle Grip

Product #41-1420

- Seamless construction for comfortable fit
- Coated palm and finger
- Excellent thermal insulation
- Quickly evaporates moisture from the skin



HI-VIS Coated Acrylic Glove with Latex Microfinis® Grip

Product #41-1400

- Seamless construction for comfortable fit
- Coated palm and finger
- Quickly evaporates moisture from the skin
- Excellent launder-ability characteristics



Black Seamless Outer Liner/Acrylic Inner Shell w/ Black Microfinis® Grip

Product #41-1430

- Acrylic gloves provide economical cold weather protection
- Latex MicroFinish coating provides a superior grip in dry and wet conditions
- Excellent thermal insulation



Maxifle® Ultimate™ HI-VIS Seamless Knit Nylon/Lycra Glove with Nitrile Coated Micro-Foam Grip

Falcon Viz 2-Piece Value Rainsuit Set

Product # 353-1000

- Hi-VIS
- ANSI Type Class R3
- Lightweight polyester with waterproof PU coating and taped seams
- Zipper closure with storm flap
- Elastic waist pant with snap adjustable cuff
- Concealable hood for extra protection
- 2" silver reflective tape

Class R3 apparel is intended for workers requiring the highest level of visibility, have high task loads and need to be visible throughout a full range of body motions.

WINTER ACCESSORIES



Safety Products for LIFE.



Value Black Trim Bomber

Product # 333-1766 LY

Sizes: M-5XL

- Hi-VIS Lime Yellow
- ANSI 107 Class 3
- Durable Waterproof polyester outer shell with taped seams
- Back trim helps conceal dirt
- Removable black fleece liner
- 2" silver reflective tape
- 5 pockets with radio/pen pockets



Hoodie Sweatshirt

Product #W377-61550

Sizes: M-5XL

Hoodie with drawstring. Black bottom conceals dirt & grime. Large pass through front pocket.



Jacket

Sizes: M-5XL

Product #62204

Men's Class 2 polyester bonded with fleece. 2 exterior pockets with waterproof zipper. Full length storm inner lap. Jacket is water resistant.



Rainpants

Product #63130

Sizes: M-3XL

Waterproof with sealed seams. Quilted lining. Zipper/snap front closure. 2 front pockets and 2 back pockets.



NEW

Product# W651 LS2 (Special Order)

Sizes: M-3XL

Women's Class 2 polyester bonded with fleece. 2 ext zipper pockets. Full length storm inner flap. Jacket is water proof and wind resistant. Adjustable sweep (drawstring) and sleeve cuffs. Black bottom.



Raincoat

Product #4148

Sizes: M-5XL

Vented cape back with storm flap. Detachable hood. Corduroy collar. 2 outside pockets w/ flaps. Snap front closure w/ storm flap.

WINTER ACCESSORIES



**EAGLE
INDUSTRIES**
JOBSITE PRODUCTS

Reinforced Poly



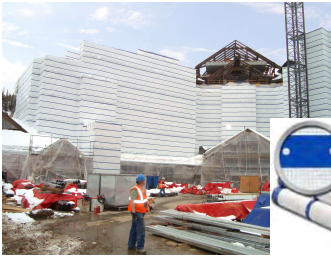
Applications:

- Creates a temporary weather enclosure
- Used as temporary walls, partitions, covers
- Provides a containment for dust, debris & abatement
- Increases temporary heating efficiency during winter
- Handles well in low temps
- Allows sunlight to transmit through for lighting
- Scaffold & construction building enclosures

Product Features:

- High strength polyethylene film with a square tear resistant reinforced scrim
- 6 Mil thickness
- Durable center seam heat laminated reinforcement band
- Weather, mold & mildew resistant
- UV treated
- Flame Resistant poly meets NFPA 701 Test Method 2

Scaf-Lite™



Available:

SL-74136 7'4" x 136' WHITE
SL-13100 13' x 100' WHITE

Applications:

- Creates a temporary weather enclosure
- Provides a containment for dust & debris
- Increases temporary heating efficiency
- Handles well in low temps
- Allows sunlight to transmit through for lighting
- Scaffold & construction building enclosures

Product Features:

- High strength string reinforced polyethylene sheeting built with reinforced eyelet brands
- Blue reinforced eyelet bands for fastening bungee ties
- 12 mil heavy duty sheeting
- Tear resistant, weather resistant, and UV treated
- Easy to install with Eagle Bungee Ties
- Flame retardant poly meets NFPA 701 Test Method 2

Shrink Wrap



Available:

SW920100WTFR 20' X 100'

Applications:

- Seamless weather-tight enclosure
- Conforms to almost any structure
- Allows sunlight to transmit through for lighting
- Scaffolding & Construction building enclosure

Product Features:

- Premium grade poly film sheeting formulated with industry leading shrink properties
- 9 mil thickness, consistent mil thickness throughout film
- Weather, mold & mildew resistant
- Flame retardant shrink wrap meets NFPA 701 Test Method 2

Accessories



LOGO. LEADER.



Custom Printed Safety Protection



LOGOS ARE GREAT FOR:

- Corporate Identity
- Work Crew Segmentation
- Ground Breaking Ceremony
- Visitor Identification



- Choose your product & submit your logo & camera ready artwork to **Jobsite Supply** for your custom safety gear!

**JOBSITE
SUPPLY**
CONSTRUCTION IDEAS AT WORK

800-874-7415

Headquarters
624 S. Missouri St
Indianapolis, IN 46225

317-684-7474

Monday—Friday
6 am—5 pm

Saturday
7 am—Noon
April—October

Northern Indiana

3501 Kenosha Rd
Fort Wayne, IN 46806

260-494-3200

Monday—Friday
7 am—5 pm

