

JOBSITE SUPPLY

CONSTRUCTION IDEAS AT WORK

SAFETY CATALOG

317.684.7474

JOBSITESUPPLY.COM



OSHA's Crystalline Silica Rule: Construction

OSHA is issuing two standards to protect workers from exposure to respirable crystalline silica—one for construction, and the other for general industry and maritime—in order to allow employers to tailor solutions to the specific conditions in their workplaces.

Who is affected by the construction standard?

About two million construction workers are exposed to respirable crystalline silica in over 600,000 workplaces. OSHA estimates that more than 840,000 of these workers are exposed to silica levels that exceed the new permissible exposure limit (PEL). Exposure to respirable crystalline silica can cause silicosis, lung cancer, other respiratory diseases, and kidney disease. Exposure can occur during common construction tasks such as using masonry saws, grinders, drills, jackhammers and handheld powered chipping tools; operating vehicle-mounted drilling rigs; milling; operating crushing machines; and using heavy equipment for demolition or certain other tasks.

What does the standard require?

The standard requires employers to limit worker exposures to respirable crystalline silica and to take other steps to protect workers.

The standard provides flexible alternatives, especially useful for small employers. Employers can either use a control method of the construction standard, or they can measure workers' exposure to silica and independently decide which dust controls work best to limit exposures to the PEL in their workplaces.

Regardless of which exposure control method is used, all construction employers covered by the standard are required to:

- Establish and implement a written exposure control plan that identifies tasks that involve exposure and methods used to protect workers, including procedures to restrict access to work areas where high exposures may occur.
- Designate a competent person to implement the written exposure control plan.
- Restrict housekeeping practices that expose workers to silica where feasible alternatives are available.
- Offer medical exams—including chest X-rays and lung function tests—every three years for workers who are required by the standard to wear a respirator for 30 or more days per year.

When are employers required to comply with the standard?

Construction employers must comply with all requirements of the standard by June 23, 2017, except requirements for laboratory evaluation of exposure samples, which begin on June 23, 2018.

Additional information on OSHA's silica rule can be found at www.osha.gov/silica.

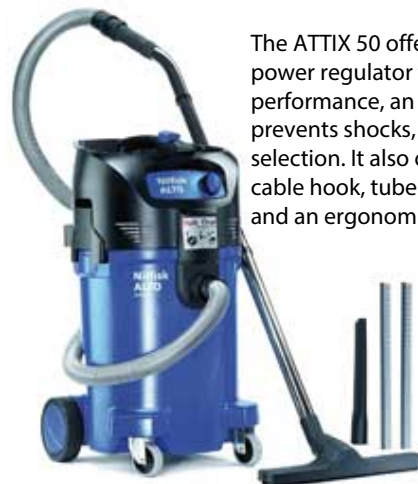
<https://www.osha.gov/Publications/OSHA3681.pdf>

Crystalline Silica Rule Solutions

DWV012

10 Gal Wet/Dry HEPA
Dust Extractor with
Automatic Filter
Cleaning

- Automatic Filter Clean pulses every 30 seconds for continuous operation
- Variable suction control
- Features power tool actuation



The ATTIX 50 offers features such as a power regulator that adjusts suction performance, an anti-static feature that prevents shocks, and adjustable hose selection. It also offers silent operation, a cable hook, tube and accessory holder, and an ergonomic and sturdy grip.

ATTIX 50 HEPA
12-Gallons
140 CFM
57 dB(A)
105" Water Lift



BEST SELLERS

I-Protect & Economy Boas

Clear
#17940



Smoke
#17941



I/O
#17942



Nemesis Safety Glasses & Octane



#15332



#3000356



N-95 2-Strap Respirators

#8210
w/o valve



#8511
with valve



Disposable Foam Ear Plugs

#P1000
Uncorded
200/box



#P1001
Corded
100/box



V-Gard Fastrac Hardhat



Multiple colors and sizes available.

Maxi-Flex Nitrile Gloves



#34-874, S-XXL



Nitrile Dip Gray Palm Economy Glove



#34-225, S-XXL



Power Grab Thermo-Winter Glove



#41-1430, S-XXL



Protecta Harness



Multiple
sizes
available.



Rebel Cable SRL



#RLD-10 #AD111A #AD115B

Available in 10', 15', 33', 50'



5 Gallon Red Safety Can



Diesel, Gas, Kerosene
Also available multiple sizes



Class 2 Safety Vest



ANSI Class 2 (class 3 also available)

Zipper closure
#61650, M-4XL



Barricade Tape



#BT1200E
3"x1000'



#BT1213
3"x1000'



First Aid Kit & Bloodborne Pathogen Kit



#K401050
#K401025 -
#K401060



Compliance In A Can Roofer's Kit



#2199811

50' Rope Lifeline
5/8 Rope Grab
Adjustable roof
anchor
universal harness



6' Dual leg Lanyard Rebar Hook

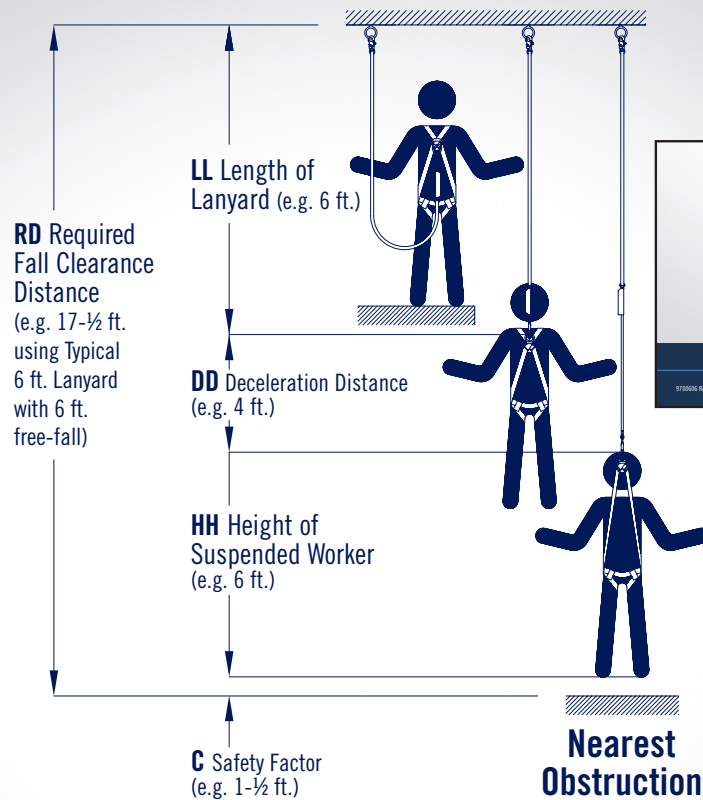


#1340180



CALCULATING YOUR FALL DISTANCE

Measured From Rigid Anchor Point



$$RD = LL + DD + HH + C$$

- 1) Add 1 ft. to **DD** for free-fall over 6 ft. up to 12 ft. or for person over 310 lbs. up to 420 lbs. with 6 ft. max. free-fall for ANSI & OSHA compliant lanyards.
- 2) Add 1.7 ft. to **DD** for Canadian CSA Z259.11-05 (E6) compliant lanyard.
- 3) D-ring slide and harness stretch factors are built into **HH** and **C**.
- 4) **DD** shown in e.g. assumes maximum allowable amounts.
- 5) See User Instruction Manual for additional information.



THE ULTIMATE IN FALL PROTECTION

CAPITALSAFETY.COM

HOW TO DON A HARNESS Our step-by-step guide to the correct procedure

A safety harness must be worn correctly to ensure that, in the event of a fall, it works to its design potential and does not cause additional injury. Follow these steps to don your harness correctly.



1

Hold harness up by rear attachment and ensure leg straps hang free



2

Pass arms through shoulder straps



3

Connect chest buckle



4

Adjust shoulder straps so rear D sits between shoulder blades



5

Pull harness down at the back so sub pelvic strap sits under the buttocks



6

Connect leg buckles and adjust to a snug fit, ensuring they are assembled correctly

HARNESS CHECKLIST

- A. Ensure that the right harness is used for the job.
- B. Check that the harness has been inspected.
- C. See that all clips and connectors are tightened, adjusted and attached.
- D. Make sure that the webbing is adjusted to suit your body size - leaving the harness loose around the legs and chest may feel more comfortable but, in the event of a fall, the sudden 'jerk' that occurs when the slack is taken up can cause serious damage to the body, especially in the groin area and internal organs.

Velocity Series Harness



#01700 S-2XL

GUARDIAN
FALL PROTECTION

Bucket of Safety-Tie



#00815

GUARDIAN
FALL PROTECTION

Seraph Red and Black Construction Harness



#11173 M-2XL

GUARDIAN
FALL PROTECTION

Premium Edge Construction Harness



#193061

GUARDIAN
FALL PROTECTION

Beamer 2000



#00101

GUARDIAN
FALL PROTECTION

Concrete Anchor



#00235

GUARDIAN
FALL PROTECTION

10K Mega Swivel Anchor



#00238

GUARDIAN
FALL PROTECTION

Swivel Concrete Anchor Kit



#00242

GUARDIAN
FALL PROTECTION

Sack of Safety



#00740

GUARDIAN
FALL PROTECTION

Locking Steel High Strength Carabiner



#01813

GUARDIAN
FALL PROTECTION

Pompier Hook



#01850

GUARDIAN
FALL PROTECTION

Trailing Rope Grab



#01505

GUARDIAN
FALL PROTECTION

HitchClip



#10560

GUARDIAN
FALL PROTECTION

4-Way Plate Anchor



#00691

GUARDIAN
FALL PROTECTION

Premium Cross Strap



#10787

GUARDIAN
FALL PROTECTION

Concrete Anchor Strap



#10715

GUARDIAN
FALL PROTECTION

Web Retractable Lifeline



#10900-11'

GUARDIAN
FALL PROTECTION

Edge Cable SRL



Available
20', 30'

#10910

GUARDIAN
FALL PROTECTION

Diablo Double SRL



#11051-6'

GUARDIAN
FALL PROTECTION

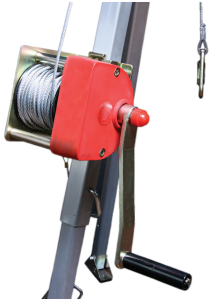
Arc-o-Pod Rescue and Retrieval system



#20001 Call for Pricing

GUARDIAN
FALL PROTECTION

Arc-o-Winch



#15028

GUARDIAN
FALL PROTECTION

Rebar Positioning Hook



#01605

GUARDIAN
FALL PROTECTION

18" Extension Lanyard with snaphook



#01121

GUARDIAN
FALL PROTECTION

Debris Netting



48"X150'
Available in
Blue, Orange

#70001,70002

GUARDIAN
FALL PROTECTION

6' Internal Shock Lanyard



#11200

GUARDIAN
FALL PROTECTION

6' Internal Shock Lanyard with Rebar Clip



#11201

GUARDIAN
FALL PROTECTION

6' Internal Shock Lanyard Double Leg with Rebar Clip



#11203

GUARDIAN
FALL PROTECTION

2-Way universal Standing Seam Roof Clamp



#10600

GUARDIAN
FALL PROTECTION

G-Rail



#15181

GUARDIAN
FALL PROTECTION

CB Series Roof Anchor



#00645

GUARDIAN
FALL PROTECTION

C-Slab Grabber



#15500

GUARDIAN
FALL PROTECTION

Parapet Guardrail Clamp



#15170

GUARDIAN
FALL PROTECTION

Delta 3 Harness

Back/Shoulder
D-Rings w/quick connect buckles



M, L, XL - #1101655



ExoFit

Construction
style positioning
Harness - 3D



M, L, XL, 2XL

#1110476



ExoFit

Vest style
Harness - D Ring



M, L

#1109357



Protecta Pro

Construction
style
Harness - 3D



S, M/LG, XL

#1191210



Protecta Vest

Construction
style
Harness - No Belt



S, M/LG, LG/XL

#1191245



First Universal

Harness - 1D Ring



#AB17550



First Universal

Harness - 3D Ring



#AB17560



Fall Safe Harness/Lanyard Kit



#FS-126

3M Roofers Fall Protection Kit



#20058

50' Rope Lifeline
5/8 Rope Grab
Adjustable roof anchor
universal harness
6' lanyard



Protecta Pro



#1341001

50' Rope Lifeline
5/8 Rope Grab
Adjustable roof anchor
universal harness



3' Web Lanyard 1" Polyester Web



L, XL, 2X - #1475



Force2



6' Shock absorbing lanyard
100% tie-off w/rebar hooks
#1245177



Force2



6' Shock absorbing lanyard
100% tie-off w/snap hooks
#1245176



Protecta Pro Stretch



6' Shock absorbing lanyard 100% tie-off w/rebar hooks #1340161



Carabiner Self/Locking/Closing

Available in 11/16" & 2-3/16"



#2000114 - 2-3/16"

#2000112 - 11/16"



Chain Rebar Assembly



Flat style hook
#1350200



5/8" Rope Lifelines



Available in 25', 50', 100'



5/8" Rope Grab



#5000003



5/8" Rope Grab w/Shockpack Lanyard



#1340005

5/8 Rope Grab Adjustable roof
anchor universal harness
50' Rope Lifeline



5/8" Removable Mobile Rope Grab



#5000335



Zorbit Energy Absorber Only



#7401013



Reusable Hinged Roof Anchor



#AJ730A



Web Tie-Off Adaptor

6' - #AJ450A6



10' - #1002010



Protecta Reusable Concrete Anchor



#21900



42" Concrete Anchor Strap



#2100050



Saflok Reusable Toggle Anchor

For concrete and steel



#2100101



Glyder 2 Sliding Beam Anchor



#2104700



Protecta

D-Ring Extension
1.5' Long



#1385000



Eyebolt Anchor



#AN112A



Suspension Trauma Safety Strap



#9501403



Cable Retract



15' - AD115B

33' - 3590500

50' - 3590550



Web Retract



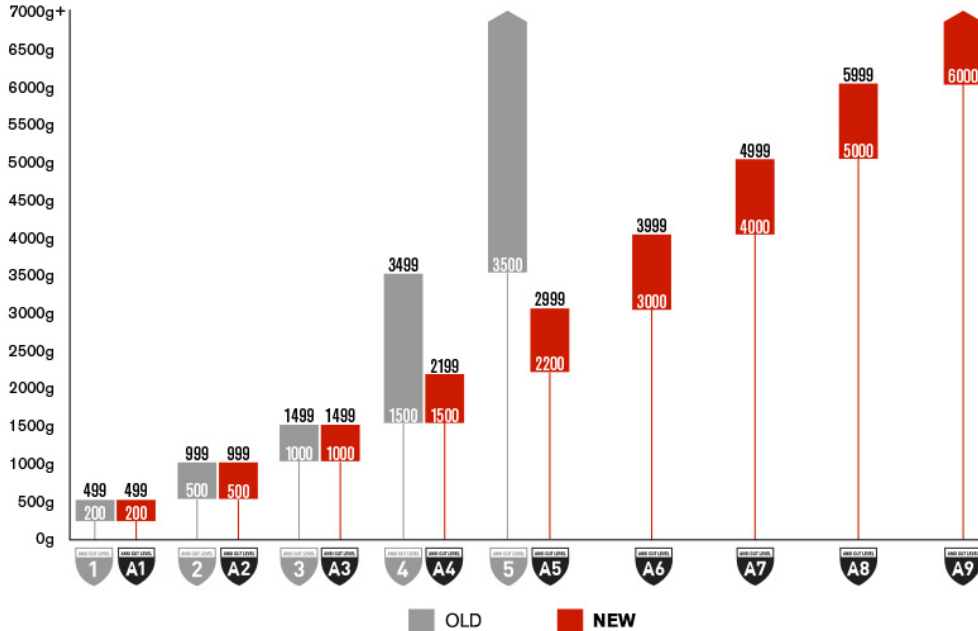
11', 16', etc.



UPDATED ANSI STANDARD for Cut Resistance ANSI/ISEA 105 (2016 edition)

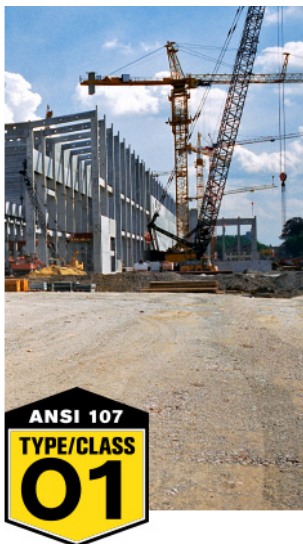
The new ANSI standard now features nine cut levels significantly reducing the gaps between each level and better defining protection levels for the cut resistant gloves and sleeves with the highest gram scores.

The graph below shows the differences between the old scale and the new scale. New ANSI cut scores will feature an "A" in front of the score.



see <http://us.pipglobal.com/en/updated-ansi-105-standard-for-cut-resistance/> for more information

UPDATED ANSI/ISEA 107-2015 High-Visibility Safety Apparel & Accessories



Type O
Off-Road Use (Class 1 only)
Provides added visibility to workers who are not exposed to traffic.



Type R
Roadway Use (Class 2 & Class 3)
Enhanced visibility for workers who are exposed to traffic and working against complex backgrounds



Type P
Public Safety Use (Class 2 and Class 3)
Enhanced visibility for emergency and incident responders and law enforcement personnel in both roadway and off-road environments.

Old tags



302-MVZPLY
LARGE
ANSI 107-2010



CLASS 2 LEVEL 2

New Tags



302-MVZPLY
LARGE
ANSI 107-2015



This garment is not flame resistant as defined by ANSI/ISEA 107-2015 Section 10.5



305-2100LY
LARGE
ANSI 107-2015



ARC RATING: 5.1 cal/cm² ATPV

Great White

3GX - Cut resistant, glove level 3



L,XXL - #19-D322



G-Tek

3GX Dyneema, glove level 4



#19-D330



Nitrile Gray Dipped Glove

Economy



M-XXL - #34-225



Maxi-Flex Nitrile Glove



M-XXL - #34-874



Maxi-Flex Ultimate Hi-Vis Glove



L-2XXL - #34-874FY



Cotton/String Knit Gloves



#35-C410/L



12" XTUF Blue Oil Resistant Gloves



Also available in Hi-Viz Orange
#58-8656L



PVC Heavy Duty Glove 14" & 18"



#58-8040 - 14"



#58-8060 - 18"



Power Grab

Cold weather, thermo glove
w/microfinish grip



M-XXL - #14-1430



Power Grab

Cold weather, thermo glove
w/microfinish grip, Hi-Vis



M-XXL - #14-1400



TrueFit

Leather glove w/thinsulate
Cold weather



L, XL, 2X - #1485



TrueFit

Leather glove



L, XL, 2X - #1475



Latex Disposable Gloves



100 per box

L & XL - #62-322



Leather Drivers Gloves

Also available w/liner
for winter warmth



L & XL - #70-300

L & XL - #70-468 (lined)



Gray Welder's Glove



L - #1000



Ninja Ice Insulated Winter Glove



M, L, XL - #N9690



Type I Safety Cans



Diesel, Gas, Kerosene
Also available multiple sizes



Fire Extinguisher



2.5lb - #466227-01
5lb - #466112-01
10lb - 466204
20# - 466206

Eye Wash Station



w/16oz - #K250-506



Eye Wash



4oz - #229-060
16oz - #



Tyvek Suits



251-TY1205 (XL, 2X)
251-TY210 (L)



Class A First Aid Kits



#K401050
#K401025
Class A & B kits
Available



Class B First Aid Kits



#K615-017
Class A & B
Kits Available



Blood Borne Pathogen Kit



#FK200906



FIRST AID KIT REGULATIONS EFFECTIVE JUNE 2016

ANSI/ISEA Z308.1-2015



Class A First aid kit

Class B First aid kit

2015 ANSI Class A Minimum Fill Requirements		
QTY	Item	Minimum Size or Volume
16	Adhesive Bandages	1" x 3"
1	Adhesive Tape	2.5 Yd
10	Antibiotic Treatment	0.14 fl. oz. (0.5g) applications
10	Antiseptic	0.14 fl. oz. (0.5g) applications
1	Breathing Barrier	
1	Burn Dressing	4" x 4"
10	Burn Treatment	1/32 oz. (0.9g) applications
1	Cold Pack	4" x 5"
2	Eye Coverings	
1	Eye Wash	1 oz.
1	First Aid Guide	
6	Hand Sanitizer	1/32 oz. (0.9g) applications
4	Medical Exam Gloves	
1	Roller Bandage	2" x 4 yd
1	Scissors	
2	Sterile Pads	3" x 3"
2	Trauma Pads	5" x 9"
1	Triangular Bandage	40" x 40" x 56"

2015 ANSI Class B Minimum Fill Requirements		
QTY	Item	Minimum Size or Volume
50	Adhesive Bandages	1" x 3"
2	Adhesive Tape	2.5 Yd
25	Antibiotic Treatment	0.14 fl. oz. (0.5g) applications
50	Antiseptic	0.14 fl. oz. (0.5g) applications
1	Breathing Barrier	
2	Burn Dressing	4" x 4"
25	Burn Treatment	1/32 oz. (0.9g) applications
2	Cold Pack	4" x 5"
2	Eye Coverings	
1	Eye Wash	4 oz.
1	First Aid Guide	
10	Hand Sanitizer	1/32 oz. (0.9g) applications
8	Medical Exam Gloves	
2	Roller Bandage	2" x 4 yd
1	Roller Bandage	4" x 4 yd
1	Scissors	
1	Padded Splint	4" x 24"
4	Sterile Pads	3" x 3"
1	Tourniquet	1"
4	Trauma Pads	5" x 9"
2	Triangular Bandage	40" x 40" x 56"

Class A
designed for
common
workplace
injuries

Class B
designed for
high risk and
complex work
zones

Class B
suggested for
any workzone
where PPE is
required.

**Examples of
high risk
workplaces:**

**Construction
Utilities
Industrial
Manufacturing**

**Balaclava Liner
#6821**



**Arctic 2 in 1 Liner
#16651**



**Blue Long Wool Liner
#14501**



**Quilted Hard Hat
Liner 145oz**



**Winter Liner
Poly Fleece Hood**



**Navy Full Face Liner
#14497**



**Orange & Lime
Sock Hat Beanie**



Jobsite Supply Beanie



CHILL ITS



Cooling Towel Blue



**Water Cooler
Truck Bracket**



6.5oz Cone Paper Cups

200 per sleeve
12 sleeves per case



**Water Coolers
5 gal & 10 gal**



5 gal - #1685IS
10 gal - #1610IS

Gatorade



Available in 2.5 gallon
powder mix or 20 oz bottles

**Water by the Pallet
Geyser/Niagra**



Bags of Ice



I-Protect



#17940 - Clear



I-Protect



#17941 - Smoke



I-Protect



#17942 - 1/0



Readers



Multiple Brands and
Magnifications Available



#3020706
Smoke

#3020707
Clear



#3030707
Amber

#3020709
Red



Flex Side Shield



#E1715



Nemesis



#3000355
Black Frame Smoke



#3000356
Black Frame Clear



Octane



15326 - Smoke lens
15332 - Mirror lens
15337 - Clear lens Camo frame



#18618
#18619



Pink Glass



Ammo Smoke & Clear Foam Lined Glasses



#15410 - Clear
#15411 - Smoke



Virtua Blue Mirror Glasses



#11331



Virtua Amber Lens



#11545



332 Impact Goggle



#40651



OX 2000 Over the Glasses Protection Eyeware



#12166



Virtua V4 Lens



#11672 clear
#11673 smoke
#11674 i/o mirror



Boas Polarized Brown Smoke



#17923



Push-In



#318 1001
#318 1000

3M

Nitro Cord/Uncorded



#P1000
#P1001

3M

Taper Fit



#312-1224

3M

Notch Earplug



#P2000

3M

ERB 105 Ear Muffs NRR 26dB



#97315-80000

ERB
Safety Products for LIFE.

1/2 Face Respirator



#6100 Small
#6200 Medium
#6300 Large

3M

Full Face Respirator



3M6700Small
3M6800 Medium
3M6900 Large

3M

Particulate Filter



#2097 P100

3M

Organic Vapor Cartridge



#60921

Fits 6100 Series mask.

3M

Dust Masks



#8210+



#8211



#8511

3M

Valve Lockout



#64057

Brady Scaffold tag kit



#104115BY

Scaffold Inspection Tag



#SPT3



#SPT1

Lockout/Tagout



#6590BYEA

Lockout Locks



Call for pricing

Masterlocks



Multiples Sizes and Styles in
Stock
#5 fits most Knaack and Jobox
boxes

V-Gard Fastrac Hardhat



MSA - Multiple Colors



V-Gard Full Brim



Multiple Colors Available



Skull Guard



Full Brim/Ball Cap



MSA Metal Holder



#10158799



W 96 Clear/Green/Smoke



MSA Universal Holder



#16115822



MSA Clip in Cap Holder



#10115730



Screens/Face Shields



#10115840

#10115861



#10116557



ERB Omega II



Full Brim/Ball Cap



ERB Metal Holder



#15185



Select Blue Ear Muffs



#97315-80000

Vendor #14234



ERB Americana



3M Face Shield Kit



Peltor Clip In 3M Earmuffs



Lens Wipes - 3M



#83745-00000



Peel Off Face Shield Protectors



#6885/07142
fits 6000 series
respirators



**Marking Paint
#AT3701**



Krylon Inverted
Green, Orange, Yellow,
White, Black, Pink, Blue, Red

**Flagging Tape
#65601**



6 Colors Available
150' & 300' Rolls

**Electrical Tape
#15061**



7 Colors Available

**Duct Tape
#204202-1024**



24/Case
2", 3", & 4" Available

**Pennant Flags
#14991-79**



Yellow & Red
60lf Per Roll / 600lf Per Box

**Survey Flags
#15901-10-21**



White, Blue, Yellow, Red,
Orange, Green

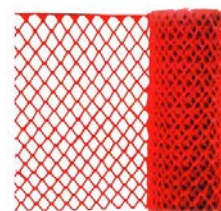
Barricade Tape



Reinforced caution
Tape

#BT1213

**Orange Safety Fence
4'x100'**



#SF4100

18" Traffic Cone



Reflective PVC
3# Base

#15018-HIWB-C3
Also available in non reflective

28" Traffic Cone



Reflective PVC
7# Base

#15028-HIWB-C7
Also available in non reflective

**42" Delineator
with 16# base**



#46133-CRU-16HP

28" Enviro Cone



Made of
Recycled Plastic

10# Base

Doesn't wither
like PVC

Also available in non reflective

**36" Vizcon Sign
Stand Holder**



#22000

**36" Zephyr Sign
Stand Holder**



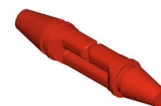
#26000

36" Signs



Multiple Legends Available

T-Cap



#16028-L-H1WD-7

Wobble Light
"No set up, just plug it in"



Self Righting
Shock
Protected Bulb
36" Tall

#WL175MH
Available in 85, 175 & 400 watt

**1000 Watt Twin Head
Telescoping Tripod Stand**



#L14SLED
*Replacement Bulbs Available

**108-LED Portable
300 Watt Light**



Cool to the
Touch
50,000 hr
Bulbs
Up to
30 years

#L1306

**500 Watt Halogen
Work Light**



#L33

360° LED Worklight



#5220

3 Panel Design
Low Heat Output
3000 Lumen
Available w/stand-#5270

**500 Watt Single Head
Telescoping Tripod Stand**



50" Tall
Shadow Fighter
Grill

#L10SLED

**120watt LED High bay
Light**



#CL120LED

**50' Temporary
String Light**



OSHA Yellow
Led Available
#075388802

**36 LED Light w/Easel
& Spotlight**



3 Modes
Magnetic Base

#L1407

**72 LED Re-Chargeable
Trouble Light**



Lithium
Rechargeable
Battery
12V Charger
Included

#L1925

**6 LED Headlight
95 Lumen**



4 Modes
Weather Resistant
#HDL33AINE

**3 LED Headlight
50 Lumen**



2 Modes
Weather Resistant
#HD33AIEN

**250 Lumen
Rugged Headlight**



25' Drop Tested
3 Modes
#TUFHD3IPE

**20 V. Max Dewalt Lithium
Ion LED Work Light**

11-25 hr Runtime

Integral hook
for hands free
placement.

#DCL040



Also available in Area Light
#DCL050

**Milwaukee M18 LED
Lantern & Floodlight**



#2363-20

Skyhawk



#2361-20

Absorbent Sock



3"x4'
#AW412

Universal Spill Kit



5 Gal - #SPKV-5
Available in 30 & 55 gal

Witches Hat



#9219

Ultra Spill Pallet 2-Drum



#2504

Debris Netting



#DF4150 - 4"x150'
#DF6150 - 6"x150'

Silt Fence



#SF100 - 3"x100'

Dewatering Bag



Call for Pricing

Oil Dry



Call for Pricing

Squeegees



Multiple Sizes &
Shapes Available

Smooth Bristle Gray Broom



24" & 36"

OSHA Hi-VIS Broom



#1316-VS 16"

Big Blue Broom Hard Bristle



18" & 24"

55 Gal Drum Liner



#301595
100/Box

42 Gal Trash Bag



55 Gal Drum



Multiple sizes Available
Lids also available

Tilt Carts



1/2 and 1 YD
Lids also available

ANSI Class C Mesh Vest

Zipper Closure, Exterior Waist Pockets, ANSI/ISEA 107



M-5XL - #61647



ANSI Class C Surveyors Vest

Zipper Closure, 12 Pockets, ANSI/ISEA 107



M-5XL - #61200



ANSI Class C Break Away Vest w/D-Ring Slot

Hook & Loop Closure, D-Ring Slot on Back, 6-Pockets, ANSI/ISEA 107



M-5XL - #61390



ANSI Class S Mesh Vest

Zipper Closure, 4 Pockets, ANSI/ISEA 107



M-5XL - #62136



W377 Class 2 Sweatshirt

Pullover Style, 7oz Polyester, Attached Hood



M-5XL - #W377-61550



Class 3 Hooded Sweatshirt

Zipper Closure, 2 Front Pockets, Available in Yellow & Orange



M-5XL - #323-HSSELY



Class 3 HI-Viz Rain Suit

Waterproof w/Sealed Seams, Snap Front and Wrist Closure, Attached Hood



M-6XL - #353-1000



Class 2 Soft Shell Jacket

Breathable, Water & Wind Resistant, Extended Tail, Adjustable Cuff



M-5XL - #62204



Class 2 HI-Viz T-Shirt

Outside Chest Pocket, 4.1oz Breathable Polyester, 50+UPF UV Protection



M-5XL - #21503



HI-Viz Winter Beannie Cap

Reflective Strip, One Size Fits Most, Non-ANSI Non FR



#360-BEANNIE

Class 3 Black Trim Bomber

Waterproof Polyester, Removable Liner, Mic Tabs, 5 Pockets



S-6XL - #333-1766



Class 3 Rip Stop Premium Bomber

Rip Stop Waterproof Polyester, ID/Radio/Cell Pocket, Removable Liner, D-Ring Slot on Back



M-5XL - #333-1770



Class 3 7-1 All Conditions Jacket & Vest Combo

Removable Liner w/Removable Sleeves, Waterproof, Reversible



#343-1756-YEL



Class 2 Lime Ball Cap

360° Visibility, Machine Washable, Breathable Mesh



#3013114

Maxifl x Ultimate Nitrile Coated HI-Viz Glove

Ultra Cool, Silicone Free, CFIA Approved



#34-874FY
Multiple sizes Available

Custom Printed Safety Protection

Great For:

Corporate Identity
Work Crew Segmentation
Ground Breaking Ceremony
Visitor Identification

*Low 12 piece minimum

Altair 4X Gas Monitor



#1017602



Gas Monitor Regulator



#467895



Calibration Gas



#10048280



Calibration System



#10128644



AH Air 5x Gas Monitor



#10115120
Call for Pricing



Gas Accessories



Single Gas Detector
Call for Pricing



Allegro Fan for Confined Space



#9533 - 8", Can Blower - 8"
Sale/Rent Electric

Confined Space Tripod Whole Set Up



#8000000



Winch/SRL



#3400108



Boysen Chair



#DBI-1001140



Confined Space Tripod Winch/Tripod/Pulley/Mount Bracket



#AA815AG



Vertical Lifeline System



#5000400



Horizontal Lifeline System



#DBI-7602060

Fall Safe Horizontal Lifeline



#FS804

Spreader Bar



#E522-SBI



Guard Rail Safety Boot



#SB6Y - Yellow

#SB6 - Orange

2x4 Carnie Cap

T-Shirt Rags



10# & 50# Box

Rags in a Box 200 Count



#75260

Wypall Waterless Wipes



#91371

Big Wipes



#6002-0046

Fast Orange Hand Cleaner



128oz, 64oz, 15oz

Simple Green & 409



#13005
#3357712Y

Insect Repellent II Zika

#S0085600



Blast 'EM Wasp and
Hornet Spray

#S0085700



Fix A Flat & Slime



#S430
#10009

Washer Fluid



#30907

Booster Cables



#553-0399

Carpet Shield



24'X200'
30'X200'
36'X200'

18" Mesh Warning Flag



#0102822

18" Stop/Slow Paddles



24" Available w/84" Handle

Welders Jacket



#623036

Load Hugger 2"x27'



#61001

Ratchet 2"x15'



#89519

Werner Ladders



Many Sizes Available



Werner Podium Ladder & Accessories



3', 4', 6', 8'
Available



Clean Mats



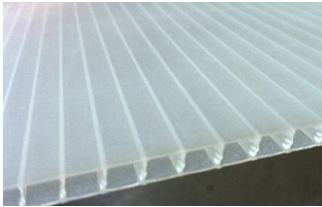
24"x36"
36"x36"

Builder Board



38"x100' 317 sqft

Plasti Shield 4'x8' Floor Protection, Non-Absorbent



#PLS4896W4

HD Zipper



#ZU02

6'9"-21' Zip Wall Kit



#KIT20

5'6" 2pk Zip Wall Kit



#SLP2

Zip Wall Head Plate



#TPH1

4 Steel Poles Zipper & Bag



#ZP4

Zip Wall Sidepack Kit



#SDPK

EZ Up Dust Poles



#54732

Scaffli e Sheeting Scaffold Enclosure



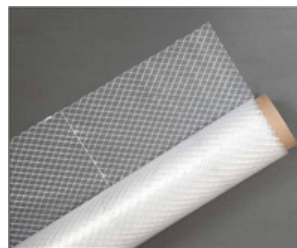
13'x100' Roll
7'4"x136' Roll

Scaffli e Bungee Cord



#A-BUN12

Reinforced Visqueen



Multiple Brands
20'x100' & 40'x100'

Twist Lock Connector



#TL

JOBSITE SUPPLY

JOBSITESUPPLY.COM

624 S. Missouri St.
Indianapolis, IN 46225

HOURS

6am - 5pm Mon. - Fri.
7am -12pm Sat. (Apr. - Oct.)

PHONE:	317.684.7474
TOLL FREE:	800.874.7415
FAX:	317.684.7484